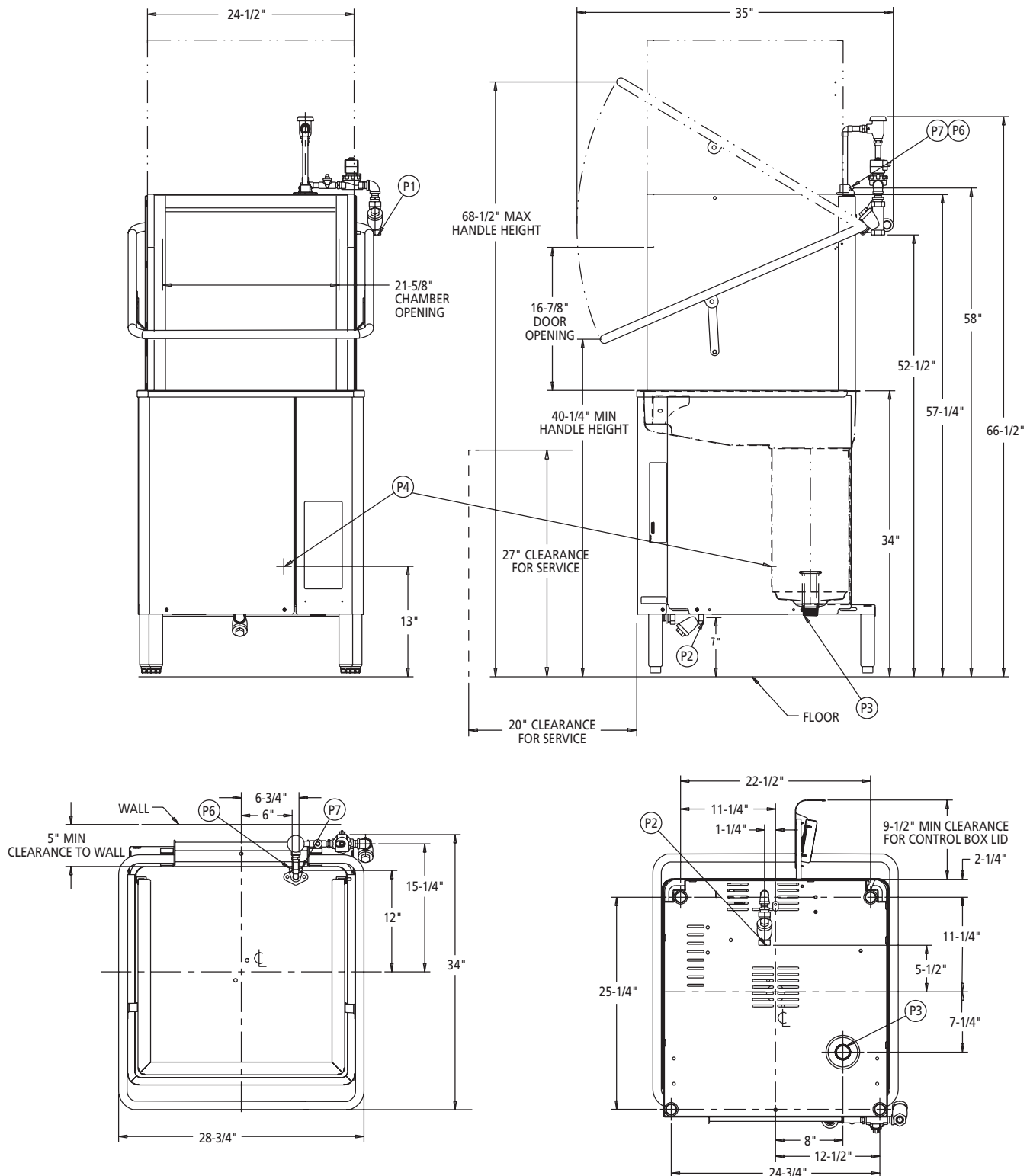




# STERO SD3

## DOOR-TYPE DISHWASHER



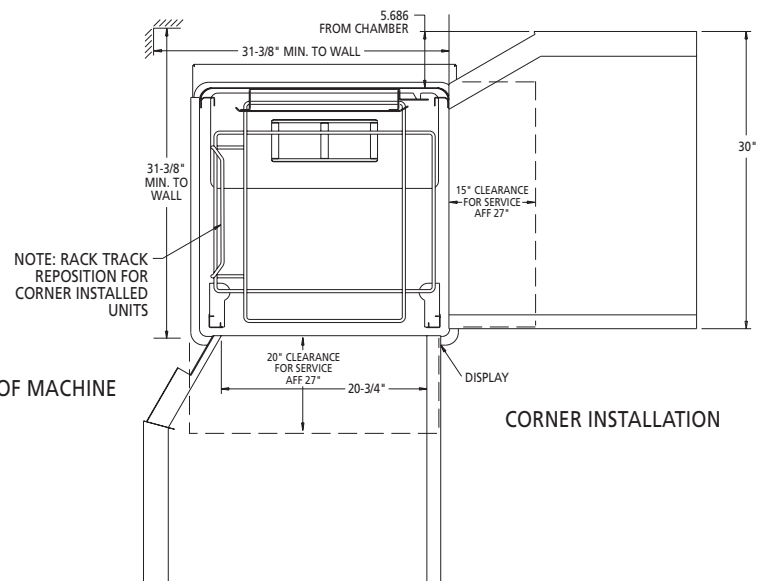
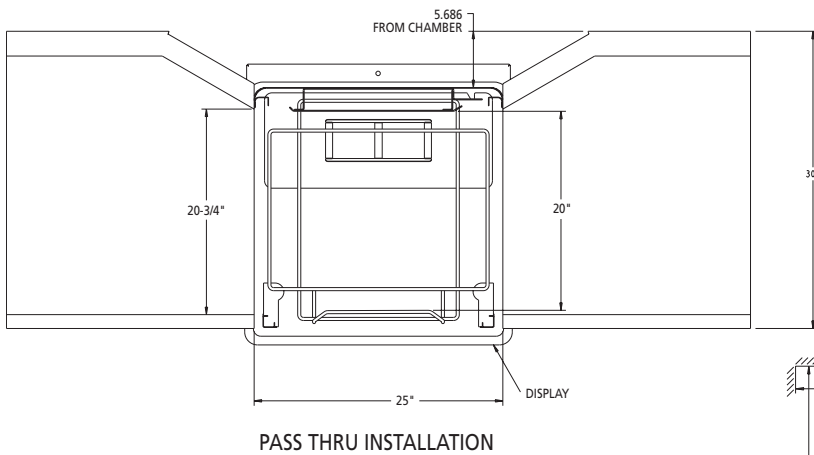
**NOTICE:** Certain materials, including silver, aluminum and pewter are attacked by sodium hypochlorite (liquid bleach) in the chemical sanitizing dishwasher mode of operation. Water hardness should be controlled to 3 grains or less for best results.

**OVERALL DIMENSIONS:** 66-1/2" H x 28-3/4" W x 34" D

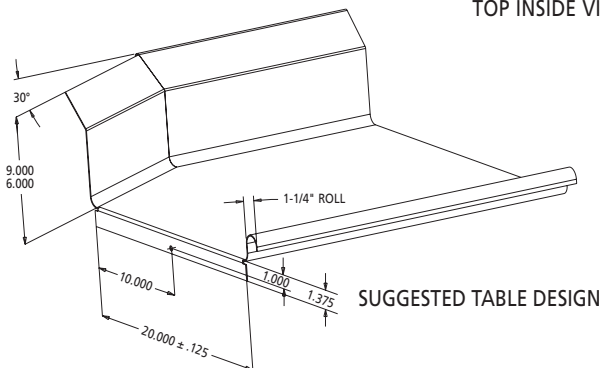
MACHINE WEIGHT		
MODEL	NET WEIGHT	SHIPPING WEIGHT
SD3	270 lbs.	302 lbs.

# STERO SD3

## DOOR-TYPE DISHWASHER

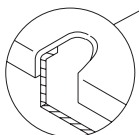


TOP INSIDE VIEW OF MACHINE

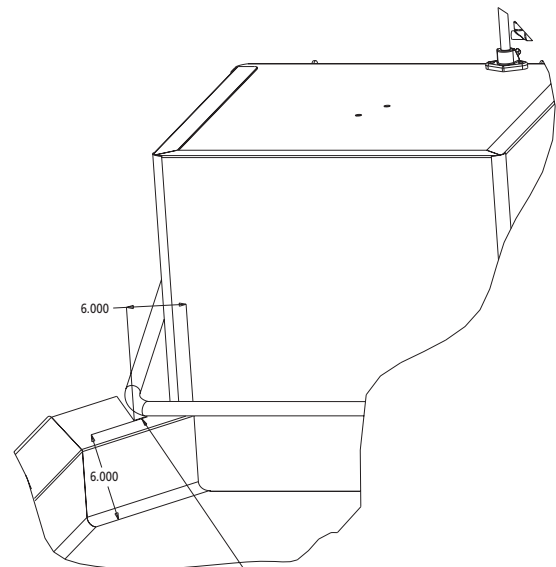


- DRILL Ø .344 HOLE THRU TANK WALL
- 5/16-18 SST TRUSS HD SCREW
- 5/16-18 SST LOCKWASHER
- 5/16-18 SST HEX HD NUT

TANK



USE SILICONE SEALER  
BETWEEN TABLE AND  
LIP OF TANK TO  
PREVENT LEAKAGE



A NOTCH MUST BE ADDED TO BACKSPASHES  
OVER 6" HIGH ON CORNER MACHINES TO  
PREVENT INTERFERENCE WITH DOOR  
MECHANISM. NOTCH MUST EXTEND 6" FROM  
FACE OF THE MACHINE.

In line with its policy to continually improve its products, Stero reserves the right to change materials and specifications without notice.