

HYDRA KOOOL



DIGITAL CONTROLLER



TILT OUT FRONT GLASS

CURVED GLASS BAKERY/DELI CASE

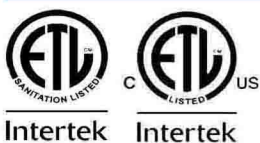
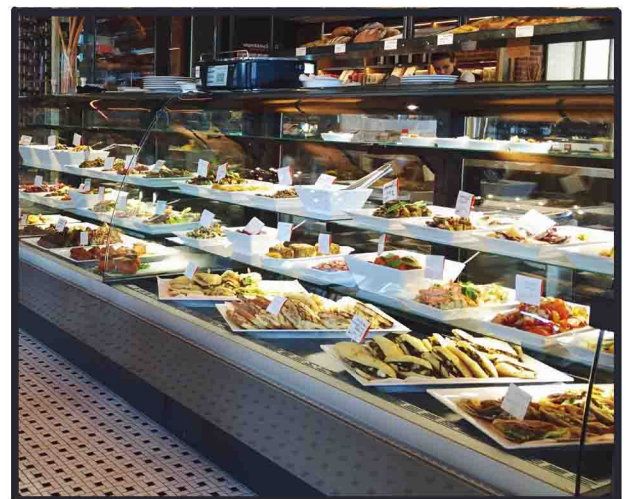
**MEDIUM TEMPERATURE
TILT OUT CURVED
TEMPERED FRONT GLASS**

MODELS

KBD - CG - (40, 50, 60, 80) - S

KBD - CG - (40, 50, 60, 80) - R

KBD - CG - (40, 50, 60, 80) - D



**REMOTE AND SELF CONTAINED
404A REF - FORCED AIR REFRIGERATION**

IN COMPLIANCE
WITH
NATIONAL
ENERGY
STANDARDS




5659 Royalmount Ave.
Montreal, QC, Canada H4P 2P9
Telephone: (514) 737-9701/Toll Free: (888)-275.4538
Fax: (514) 342-3854/ Toll Free: (877)-453-8832

12000 Biscayne Blvd., Suite #108
Miami, FL, United States 33181
Telephone: 786-600-4687/Toll Free: (844) 218-8477
Fax: (786)-661-4100

Email: sales@mvpgroupcorp.com

CURVED GLASS *HYDRA* *KOOL* BAKERY/DELI CASES

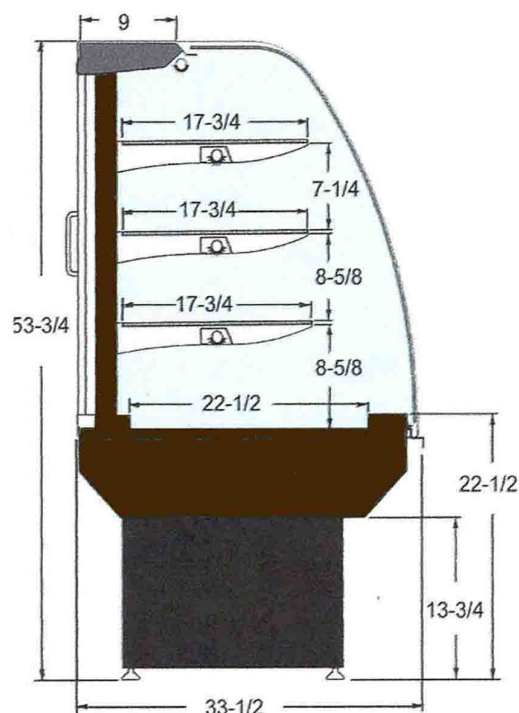
SELF CONTAINED	MODEL	O.A LENGTH INCHES	VOLUME FT ³	CASE TEMP	ELECTRICAL - 115 VOLTS						NEMA 115V PLUG	WEIGHT LBS.		CRATE SIZE		
					COMPRESSOR			LIGHTS FANS HTRS	EVAP PAN	TOTAL AMPS		NO CRATE	WITH CRATE			
					H.P.	F.L.A.	L.R.A.							"L"	"W"	"H"
	KBD-CG-40-S	40-3/8	13.28	39/41 F	3/8	8.4	43	1.3	3.3	13.0	5-15-P	375				
	KBD-CG-50-S	52-1/8	17.5	39/41 F	1/2	9.6	49	1.5	3.3	14.4	5-20-P	437				
KBD-CG-60-S	60	20.31	39/41 F	1/2	9.6	49	1.6	3.3	14.5	5-20-P	478					
KBD-CG-80-S	77-1/2	26.56	39/41 F	1/2	9.6	49	2.7	3.3	15.6	5-20-P	558					

REMOTE	MODEL	O.A LENGTH INCHES	CASE TEMP	115 VOLTS TOTAL AMPS	B.T.U.	WEIGHT LBS.	
						NO CRATE	WITH CRATE
	KBD-CG-40-R	40-3/8	39/41 F	.82	2621	318	
	KBD-CG-50-R	52-1/8	39/41 F	1.06	3110	381	
	KBD-CG-60-R	60	39/41 F	1.1	3268	423	
	KBD-CG-80-R	77-1/2	39/41 F	2.2	3987	529	

NON REFRIGERATED	MODEL	O.A LENGTH INCHES	115 VOLTS TOTAL AMPS	NEMA 115V PLUG	WEIGHT LBS.	
					NO CRATE	WITH CRATE
	KBD-CG-40-D	40-3/8	0.31	5-15-P	295	
	KBD-CG-50-D	52-1/8	0.33	5-15-P	353	
	KBD-CG-60-D	60	0.41	5-15-P	390	
	KBD-CG-80-D	77-1/2	0.65	5-15-P	503	

NOTE

- THESE CASES ARE DESIGNED TO OPERATE USING R404A REFRIGERANT
- LENGTH INCLUDES (2) ENDS AT 1-1/2" EACH
- B.T.U.'S CALCULATED AT +14°F AND 90°F AMBIENT CASES ENGINEERED TO OPERATE AT 75°F AND 55% RH
- ON REMOTE CASES - IF NO FLOOR DRAIN IS PROVIDED- AN EVAPORATIVE PAN MUST BE ORDERED AND 3.3 AMPS ADDED TO THE AMP LOAD
- REMOTE CASES PROVIDED WITH EXPANSION VALVE AND LIQUID SOLENOID FOR PUMPDOWN CYCLE
- REMOTE CASES ARE HARD WIRED - NO PLUGS



STANDARD FEATURES

- INSULATION - INJECTED FOAM
- INTERIOR - PVC COATED STEEL-GRAY
- EXTERIOR - PVC COATED STEEL- SILVER
- ENDS-FOAMED BLACK POLYSTYRENE
- TILT FORWARD TEMPERED CURVED FRONT GLASS
- CORD AND PLUG ON SELF- CONTAINED AND DRY
- CASES ARE MULTIPLEXIBLE
- LED LIGHTING IN CANOPY AND UNDER ALL SHELVES
- REMOVABLE REAR TEMPERED GLASS SLIDING DOORS
- DEFROST AND TEMPERATURE REGULATED BY A DIGITAL CONTROLLER
- REMOVABLE EVAPORATIVE PAN ON SELF- CONTAINED CASES FOR EASY CLEANING
- ANTI-CONDENSATE SYSTEM FOR FRONT GLASS
- ADJUSTABLE TEMPERED PULL- OUT GLASS SHELVES
- ADJUSTABLE FEET
- ETL LISTED TO UL471 AND SANITATION CLASSIFIED TO NSF7
- COMPLIES WITH DOE ENERGY STANDARDS

OPTIONAL FEATURES

- CASTERS - ADD 4-3/8" TO HEIGHT
- ADJUSTABLE STAINLESS STEEL LEGS- FROM 5-1/8" TO 7-5/8"
- OTHER COLORS AVAILABLE
- STAINLESS STEEL EXTERIOR
- STAINLESS STEEL INTERIOR
- EVAPORATIVE PAN FOR REMOTE CASES
- ADDITIONAL SHELVES
- SCALE STAND WITH RECEPTACLE

WARRANTY

ONE YEAR PARTS AND LABOR WITH FOUR ADDITIONAL YEARS COMPRESSOR (PARTS ONLY)

SPECIFICATIONS SUBJECT TO CHANGE WITHOUT NOTICE

MOUNTING

STANDARD

OPTIONAL

OPTIONAL



ADJUSTABLE FEET

ADJUSTABLE LEGS

CASTERS