



Project \_\_\_\_\_  
 Item \_\_\_\_\_  
 Quantity \_\_\_\_\_  
 CSI Section 11400  
 Approved \_\_\_\_\_  
 Date \_\_\_\_\_

# US Range Summit Series Electric Convection Oven

US Range Summit Series Electric Convection Oven

## Models

- SUME-100
- SUME-200



Model SUME-100

## Standard Features

- Solid State control with digital timer
- 2-speed fan control (high & low) with .6 HP fan motor
- Total of 10.4 kW loading per oven cavity
- Stainless steel front, sides, top, and legs
- 60/40 dependent door design with double pane thermal window in left-hand door and interior lighting
- Porcelain enameled oven interior with coved corners
- Five (5) chrome plated oven racks on 13-position rack guides
- Double deck models available, 200 series models

## Warranty

- One year limited parts and labor warranty (USA and Canada only)
- Five year limited door warranty, excluding window (USA and Canada only)

## Options & Accessories

- Windows in both doors
- 208 or 240 Volt convection oven motor
- Extra oven racks
- Swivel casters, (4) w/ front brakes
- Low profile casters, (4) w/ front brakes
- Open base with rack guides and shelf (stainless steel)
- Direct connect vent
- Back enclosure (stainless steel)
- Maximum Security Options available
- Removable stainless steel drip pan

## Specifications

- U.S. Range Summit Full-Size Standard Depth, electric convection oven.
- 10.4 kW/cavity, 0.6 HP fan motor with two speed fan control
- Solid State Control with digital timer.
- Porcelain enameled oven interior with coved corners, five (5) oven racks and 13-position rack guides.
- All model interiors are 29" (736mm) W by 24" (610mm) H, depth is 24" (610mm) Stainless steel front, sides, top, and legs. 60/40 dependent door design with double pane thermal window in left-hand door and interior lighting.
- 200 Models are double deck units. Specify voltage if other than 115 volt, 60 Hz, 1 phase.
- UL, CUL Gas-Fired and NSF Listed.



Garland Commercial Ranges Ltd.  
 1177 Kamato Road,  
 Mississauga, Ontario  
 L4W 1X4 CANADA

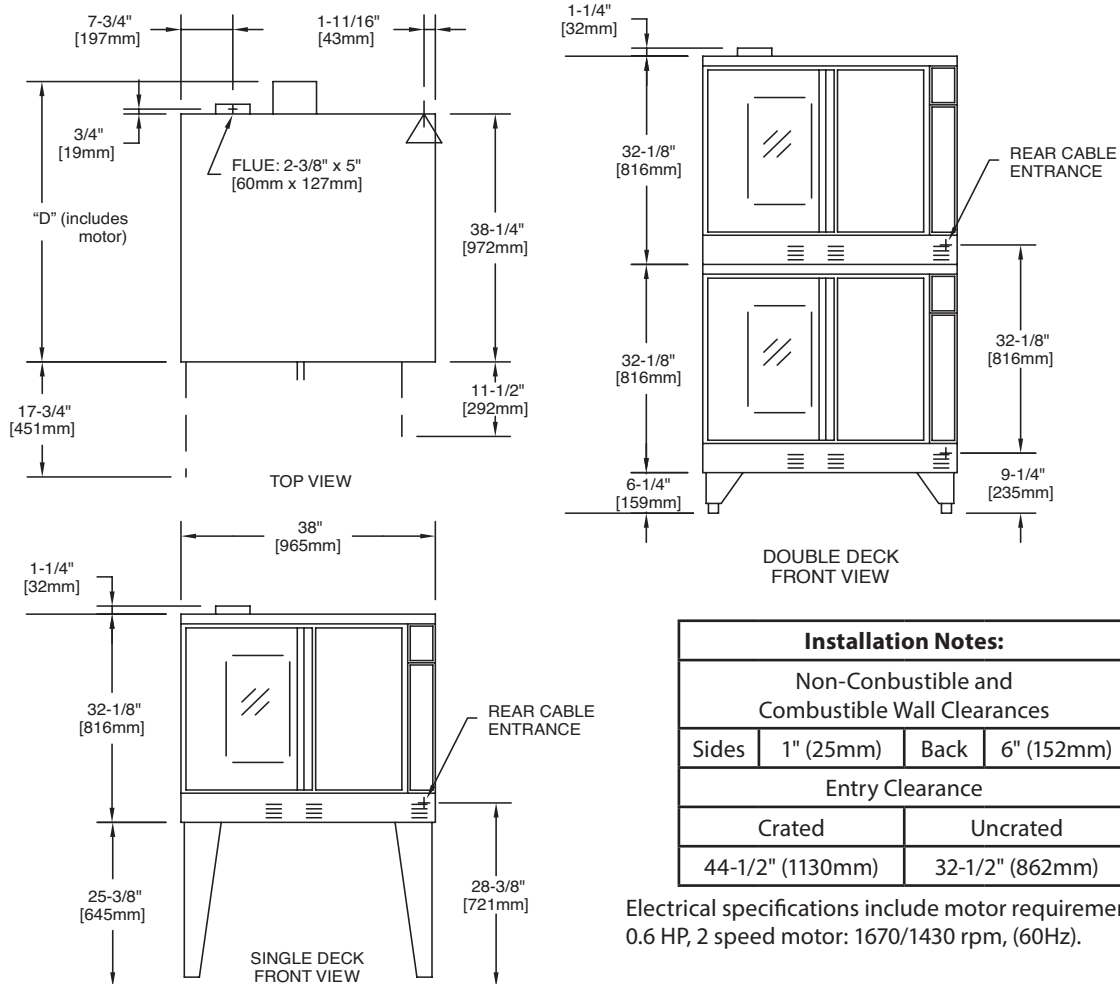
General Inquires 1-905-624-0260  
 USA Sales, Parts and Service 1-800-424-2411  
 Canadian Sales 1-888-442-7526  
 Canada or USA Parts/Service 1-800-427-6668

[www.garland-group.com](http://www.garland-group.com)  
 6824B  
 10/20





# US Range Summit Series Electric Convection Oven



## Installation Notes:

### Non-Combustible and Combustible Wall Clearances

|       |           |      |            |
|-------|-----------|------|------------|
| Sides | 1" (25mm) | Back | 6" (152mm) |
|-------|-----------|------|------------|

### Entry Clearance

| Crated           | Uncrated        |
|------------------|-----------------|
| 44-1/2" (1130mm) | 32-1/2" (862mm) |

Electrical specifications include motor requirements.  
0.6 HP, 2 speed motor: 1670/1430 rpm, (60Hz).

| SINGLE-DECK MODELS | Interior Demension (per oven) |          |          | Exterior Dimension |              |              | Ship Wt./Size |       |
|--------------------|-------------------------------|----------|----------|--------------------|--------------|--------------|---------------|-------|
|                    | W:In(mm)                      | H:In(mm) | D:In(mm) | W:In(mm)           | H:In(mm) *   | D:In(mm)     | Lbs./Kg       | Cu Ft |
| Standard Depth     | 29(436)                       | 24(610)  | 24(610)  | 38(965)            | 57-1/2(1416) | 41-1/4(1048) | 460/210       | 58.5  |

| DOUBLE-DECK MODELS | Interior Demension (per oven) |          |          | Exterior Dimension |              |              | Ship Wt./Size |       |
|--------------------|-------------------------------|----------|----------|--------------------|--------------|--------------|---------------|-------|
|                    | W:In(mm)                      | H:In(mm) | D:In(mm) | W:In(mm)           | H:In(mm) *   | D:In(mm)     | Lbs./Kg       | Cu Ft |
| Standard Depth     | 29(436)                       | 24(610)  | 24(610)  | 38(965)            | 70-1/2(1791) | 41-1/4(1048) | 920/415       | 117   |

\* Height with or without standard casters. Height with low profile casters (double deck) is 68-1/2" (1740mm).

| MODELS**       | Total kW | Nominal Amperes Per Line (includes .6 HP fan motor) |          |          |    |    |          |    |    |          |    |    |
|----------------|----------|---|----------|----------|----|----|----------|----|----|----------|----|----|
|                |          | 208v/1Ph  | 240V/1Ph | 208V/3Ph |    |    | 240V/3Ph |    |    | 460V/3Ph |    |    |
|                |          |   |          | X        | Y  | Z  | X        | Y  | Z  | X        | Y  | Z  |
| Standard Depth | 10.4     | 50  | 43       | 30       | 30 | 28 | 26       | 26 | 24 | 14       | 14 | 13 |

\*\*NOTE: Double deck models with suffix - "20M" are provided with individual power supply connections

Welbilt reserves the right to make changes to the design or specifications without prior notice.

Garland Commercial Ranges Ltd.  
1177 Kamato Road,  
Mississauga, Ontario  
L4W 1X4 CANADA

General Inquires 1-905-624-0260  
USA Sales, Parts and Service 1-800-424-2411  
Canadian Sales 1-888-442-7526  
Canada or USA Parts/Service 1-800-427-6668

[www.garland-group.com](http://www.garland-group.com)  
6824B  
10/20

